



World Health
Organization



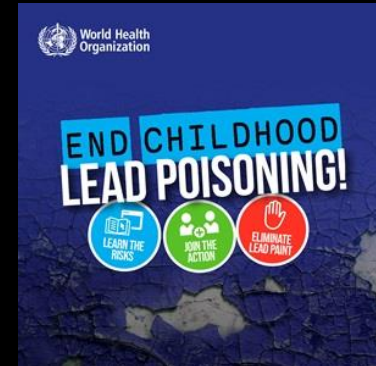
SIMATS
Saveetha Institute of Medical And Technical Sciences
(Declared as Deemed to be University under Section 3 of UGC Act 1956)



WHO Initiative-ILPPW

International Lead Poisoning Prevention Week: Oct 2023

In collaboration with Simulation & Skills Lab,
Saveetha Medical College & Hospital, SIMATS
Chennai, Tamilnadu, INDIA



WHO Initiative-ILPPW [International Lead Poisoning Prevention Week] OCTOBER - 2023

In Collaboration with

The WHO (World Health Organization)

The Departments of Internal Medicine & Clinical Skills and Simulation, facilitated by the Department of Community Medicine, conducted an awareness program on Lead Poisoning and its Prevention in concert with the current theme “End Childhood Lead Poisoning”, to 200 students studying in a Primary school in Polivakkam, Chennai, Tamil nadu State, India on October 17th and 20th, 2023

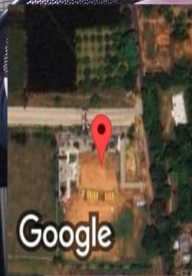
World Health Organization's (WHO) latest data estimates that more than 2 million deaths globally were attributed to chemical exposures in 2019. Lead exposure was attributed to nearly half of these deaths. Lead exposure was estimated to account for 21.7 million years lost to disability (disability-adjusted life years, or DALYs) worldwide in 2019, including 30% of the global burden of idiopathic intellectual disability, 4.6% of the global burden of cardiovascular disease and 3.0% of the global burden of chronic kidney diseases.



We observed, joining hands across the globe, WHO's "Lead Poisoning Prevention Week". PP supported Lead Poisoning Prevention awareness module was provided to 200, Primary school students at DMI St Joseph Global Senior Secondary School (CBSE) in Polivakkam, Chennai on 17th and 20th October 2023 between 9:30 am to 2:30 pm. Students came in batches of 40. 5 batches were mentored (200 students)



 **GPS Map Camera**



Polivakkam, Tamil Nadu, India
11, SH 57, Polivakkam, Tamil Nadu 602002, India
Lat 13.059491°
Long 79.9115°
17/10/23 01:16 PM GMT +05:30

THE TOXIC EFFECTS OF LEAD



BRAIN & NERVE DAMAGE



DECREASED MENTAL ABILITY & LEARNING DIFFICULTIES



SPEECH, LANGUAGE & BEHAVIOUR PROBLEMS



HEARING PROBLEMS



ANAEMIA



HIGH BLOOD PRESSURE



REDUCED GROWTH



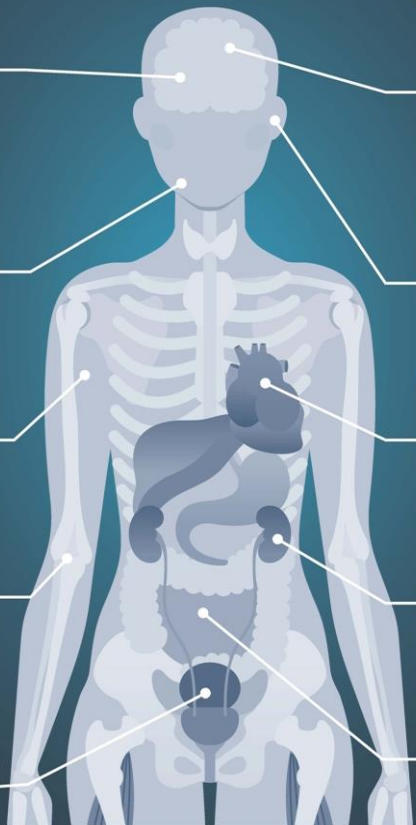
KIDNEY DAMAGE



REPRODUCTIVE PROBLEMS (ADULTS)




DIGESTIVE PROBLEMS



World Health Organization



 GPS Map Camera



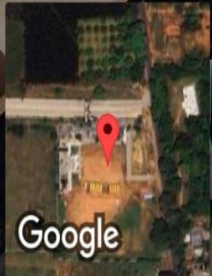
Google

Polivakkam, Tamil Nadu, India
11, SH 57, Polivakkam, Tamil Nadu 602002, India
Lat 13.059434°
Long 79.911537°
17/10/23 01:09 PM GMT +05:30



GPS Map Camera

Polivakkam, Tamil Nadu, India
11, SH 57, Polivakkam, Tamil Nadu 602002, India
Lat 13.059426°
Long 79.911528°
17/10/23 10:49 AM GMT +05:30



LEAD EXPOSURE CAN OCCUR THROUGH...

#BanLeadPaint




There is no safe level of lead exposure



On 20/10/23,
Standards
10, 11 & 12
participate in
imbibing Lead
Poisoning
awareness,
sources,
implications
and prevention



 **GPS Map Camera**

Polivakkam, Tamil Nadu, India
11, SH 57, Polivakkam, Tamil Nadu 602002, India
Lat 13.059447°
Long 79.911515°
20/10/23 12:27 PM GMT +05:30



A SYNOPSIS ON LEAD POISONING MANAGEMENT WITH WHO RESOURCE SUPPORT ALSO WAS SHARED



- Oral Succimer
- Parenteral Calcium Disodium edetatae (Calcium EDTA)
- British Anti Lewisite (BAL; Dimercaprol)
- D-Penicillamine
- Please check out in https://www.who.int/ipcs/lead_campaign/en/

20.10.2023



 **GPS Map Camera**

Polivakkam, Tamil Nadu, India
11, SH 57, Polivakkam, Tamil Nadu 602002, India
Lat 13.059447°
Long 79.911515°
20/10/23 12:38 PM GMT +05:30



The presentation was followed by a Kahoot Interactive Quiz and prizes were distributed

We also encouraged the students to communicate these concepts on Lead exposure sources, preventive steps and implications of lead poisoning with their parents



GPS Map Camera

Google

Polivakkam, Tamil Nadu, India

11, SH 57, Polivakkam, Tamil Nadu 602002, India

Lat 13.059447°

Long 79.911515°


20/10/23 12:25 PM GMT +05:30

EVENT

Geo-Tagged Photos





 **GPS Map Camera**



Polivakkam, Tamil Nadu, India

11, SH 57, Polivakkam, Tamil Nadu 602002, India

Lat 13.05943°

Long 79.911531°

17/10/23 10:49 AM GMT +05:30



 **GPS Map Camera**


Polivakkam, Tamil Nadu, India

11, SH 57, Polivakkam, Tamil Nadu 602002, India


Lat 13.059447°

Long 79.911515°

20/10/23 12:38 PM GMT +05:30





 **GPS Map Camera**



Polivakkam, Tamil Nadu, India
11, SH 57, Polivakkam, Tamil Nadu 602002, India
Lat 13.059434°
Long 79.911537°
17/10/23 11:43 AM GMT +05:30